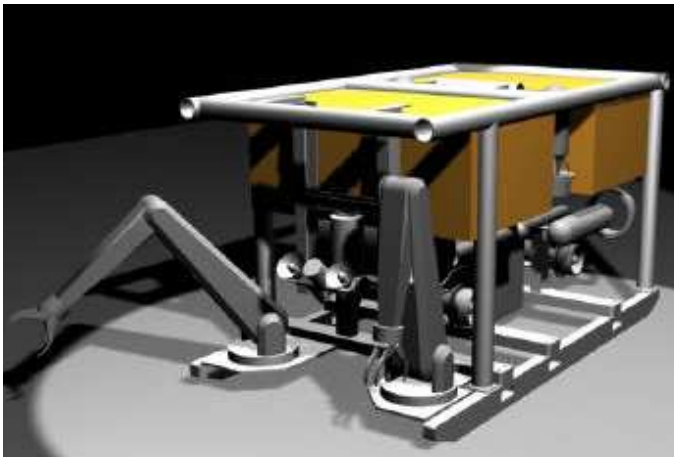


WORK & OBSERVATION VEHICLE

ROV NEPTUNE N2000

**Pipeline & Platform Inspection and Surveys,
General Video Surveys, Debris & Bottom Surveys,
Drilling & Construction Assistance,
Light Maintenance & Repair**



Technical specifications

Dimensions & Weight:

- Length: 1600 mm
- Height: 900 mm
- Width: 900 mm
- 400 kg in air, neutral in water
- Payload : 50 kg

Propulsion System:

- 8 propeller & nozzle thrusters, asynchron brushless electric motors:
 - 4 x 2000 W vectored horizontal thrusters, fore/aft, left/right & side motions,
 - 2 x 1500 W additional horizontal thrusters fore/aft, left/right motions,
 - 2 x 1500 W vertical thrusters

Maximum Speed: 3 knots

Maximum Depth:

- existing configuration: 350m
- optional: 2000-3000m

Manufacturer:

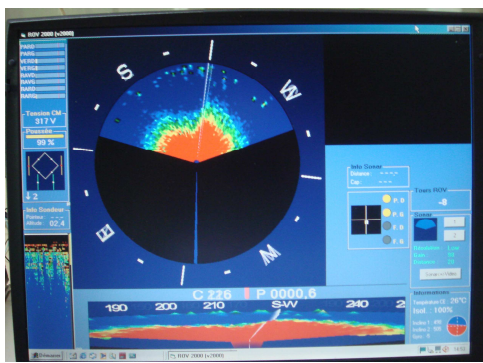
- LTI



ROV NEPTUNE N2000



Vehicle swimming pool tests



Navigation unit with sector scan sonar screen



Pilot console including joystick



Fore lighting

Technical specifications (ctn'd)

Vehicle Buoyancy:

- 2 syntactic foam side blocks, density 0.38, built in the frame

Vehicle Frame:

- Aluminium sections, welded frame and mechanical fasteners

Power: 15 kW

Static Thrust:

- Forward: around 100 kg
- Backward: around 100 kg
- Vertical: 50 kg

Tether Management System (TMS) - optional

Video:

- CCD PAL colour video camera, on a pan & tilt unit
- optional: additional camera

Lighting System:

- 2 x 220 V/250 W halogen lights, on a pan & tilt unit
- 2 x 220 V/250 W dimmable halogen lights

Control & Sensors:

- 360° sector scan sonar, 200-m range
- Altimeter
- Pressure sensor
- Magnetic compass

Optional :

- Cathodic Protection proximity probe
- Bathymetric suite
- Pipetracker
- Trench Profiler
- Electric manipulator arm
- Underwater positioning (USBL)
- Tether Management System (TMS)

Last update: 08/06/07 – This document is not contractual

